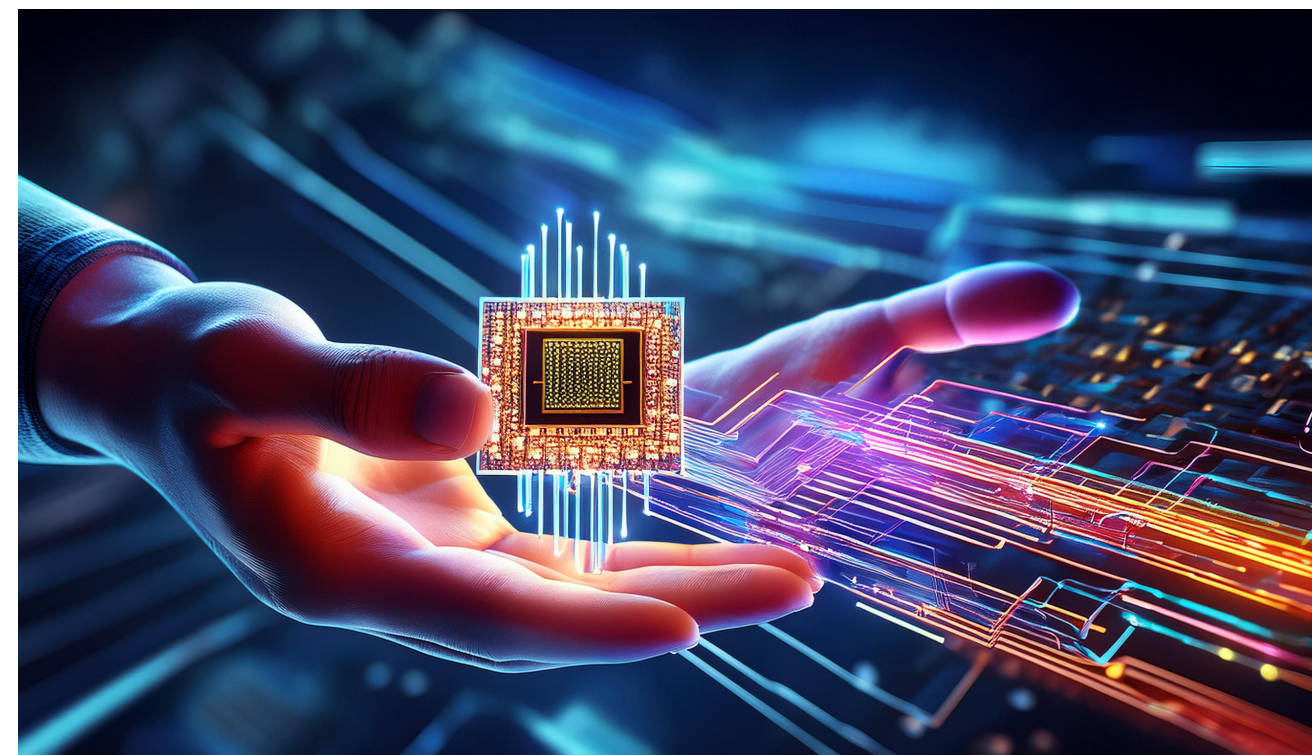




CSCI 250

Introduction to Computer Organisation

Lecture 0: Administrations



Jetic Gū
2026 Summer Semester (S2)

Overview

- Focus: Course Introduction
- Architecture: CPU and Computer Architecture
- Core Ideas:
 1. Make sure you are in the right classroom
 2. Some basic information regarding the course

What You've Learned

- From CSCI150
 - How information is represented in any digital device
 - How information is processed in any digital device
 - How computers work
 - How to design processors
- From CSCI120/CSCI125
 - How programming languages work (Python, C/C++)
 - Interpreted/Compiled Programming Languages
 - How does the file system work
 - How to debug programmes

About This Course

- How does a computer process numerical information (Integer and Float)
- How does a computer manage memory?
- How does a CPU work?
- How does a computer run programmes?
- How does a compiler/interpreter work?

About The Course

- Website:
 - <https://jetic.org/kurs/csci250/>
 - Labs, Slides, etc.
- Contact:
 - Please use Microsoft Teams
 - I check my emails much more infrequently than Teams

About The Course

- Textbook
 - *Logic and Computer Design Fundamentals*, 5th edition, M. Morris Mano, Charles R. Kime, Tom Martin, Pearson, 2016 (4th edition is OK)
 - Chapter 4, 7, 8, 9, 10
 - *Computer Organisation and Design*, 5th edition, David A. Patterson et John L. Hennessy, Elsevier, 2014
- Software
 - Intel Quartus Prime Lite, Questa FPGA Starter Edition

About The Course

- Second year undergraduate level
- Computing science, Electric engineering, etc.
- Workload: medium-high

Grading

- **Labs: 30%**
 - Quiz: 20%
 - Midterm: 20%
 - Final exam¹: 30%
- Labs are the most important component!

Grading

- **Lab:** submission on Moodle
- **Quiz&Midterm&Final:** TBA
 - Quizzes: Fridays, see course webpage for detailed dates
 - Midterm: Week 8
 - Final: Week 14

Late/Re-submission Policy

- The Following Excuses will NOT work:
 1. I have to work / I forgot;
 2. I have too many courses;
 3. I am travelling;
 4. I am not happy with my grade;
 5. My mum doesn't want me to study.

Late/Re-submission Policy

- However... for once in the semester, you are allowed 1 late/re-submission for up to 7 days from the original due / grade release
 - But only once
 - And only up to 7 days

Plagiarism Policy

- Policy for Plagiarism in Labs/Assignment
- If two submissions are too similar, you will both be charged, and appeals will usually fail
- The following will not work:
 - Our submissions are similar because the other person was sitting next to me
 - We worked on the lab together
 - The other person copied from me, I didn't do anything wrong
 - I did it myself, I don't know why our submissions are so similar