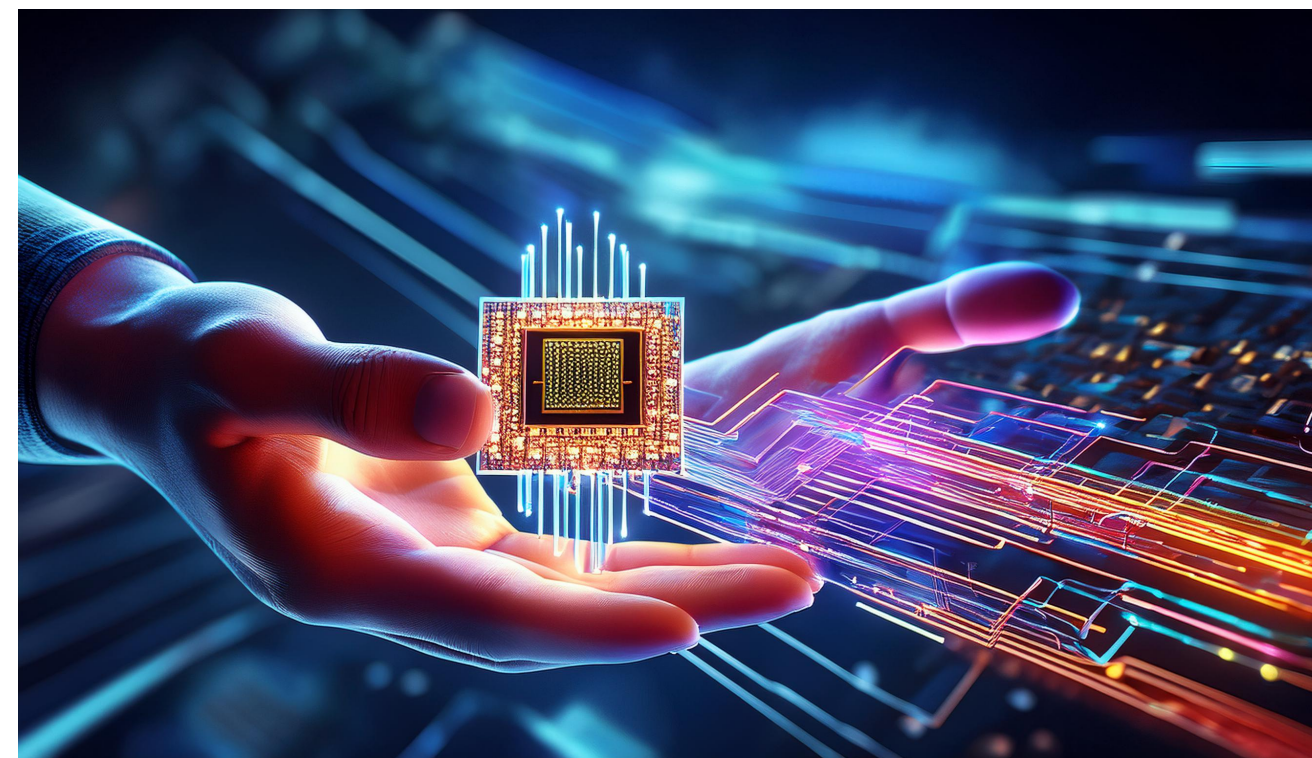




# CSCI 250

## Introduction to Computer Organisation

### Lecture 0: Administrations



Jetic Gū  
2024 Fall Semester (S3)

# Overview

- Focus: Course Introduction
- Architecture: CPU and Computer Architecture
- Core Ideas:
  1. Make sure you are in the right classroom
  2. Some basic information regarding the course

# What You've Learned

- From CSCI150
  - How information is represented in any digital device
  - How information is processed in any digital device
  - How computers work
  - How to design processors
- From CSCI120/CSCI125
  - How programming languages work (Python, C/C++)
  - Interpreted/Compiled Programming Languages
  - How does the file system work
  - How to debug programmes

# About This Course

- How does a computer process numerical information (Integer and Float)
- How does a computer manage memory?
- How does a CPU work?
- How does a computer run programmes?
- How does a compiler/interpreter work?

# About The Course

- Website:
  - <https://jetic.org/kurs/csci-250/>
  - Labs, Slides, etc.
- Contact:
  - Please use Microsoft Teams
  - I check my emails much more infrequently than Teams

# About The Course

- Textbook
  - *Logic and Computer Design Fundamentals*, 5th edition, M. Morris Mano, Charles R. Kime, Tom Martin, Pearson, 2016 (4th edition is OK)
    - Chapter 4, 7, 8, 9, 10
  - *LogicWorks5*, Capilano Computing Systems Ltd, Addison-Wesley, Manual & software used for digital hardware simulation.
  - You will need the software

# About The Course

- Second year undergraduate level
- Computing science, Electric engineering, etc.
- Workload: medium-high

# Grading

- **Labs: 30%**
  - Quiz: 20%
  - Midterm: 20%
  - Final exam<sup>1</sup>: 30%
- Labs are the most important component!



# Grading

- **Lab:** submission on Moodle
- **Quiz&Midterm&Final:** TBA
  - Quizzes: Fridays, see course webpage for detailed dates
  - Midterm: Week 8
  - Final: Week 14

# Late/Re-submission Policy

- The Following Excuses will NOT work:
  1. I have to work / I forgot;
  2. I have too many courses;
  3. I am travelling;
  4. I am not happy with my grade;
  5. My mum doesn't want me to study.

# Late/Re-submission Policy

- However... for once in the semester, you are allowed 1 late/re-submission for up to 7 days from the original due / grade release
  - But only once
  - And only up to 7 days

# Plagiarism Policy

- Policy for Plagiarism in Labs/Assignment
- If two submissions are too similar, you will both be charged, and appeals will usually fail
- The following will not work:
  - Our submissions are similar because the other person was sitting next to me
  - We worked on the lab together
  - The other person copied from me, I didn't do anything wrong
  - I did it myself, I don't know why our submissions are so similar